



**EVERY**  
Green 

 **MÜSTER & DIKSON S.p.A.**



DIKSON®



EVERY  
Green 



EVERY  
Green 

DIKSON®

EVERY  
Green 



LUNAR SHADES :  
is a range of demi-permanent hair toners



**EVERY**  
**Green**   
LUNAR SHADES

It allows the hairdresser to offer a **Toning Service** that enhances the hair

**WITHOUT ALTERING ITS NATURAL APPEARANCE.**

With LUNAR SHADES hair shines with Its OWN light from within.

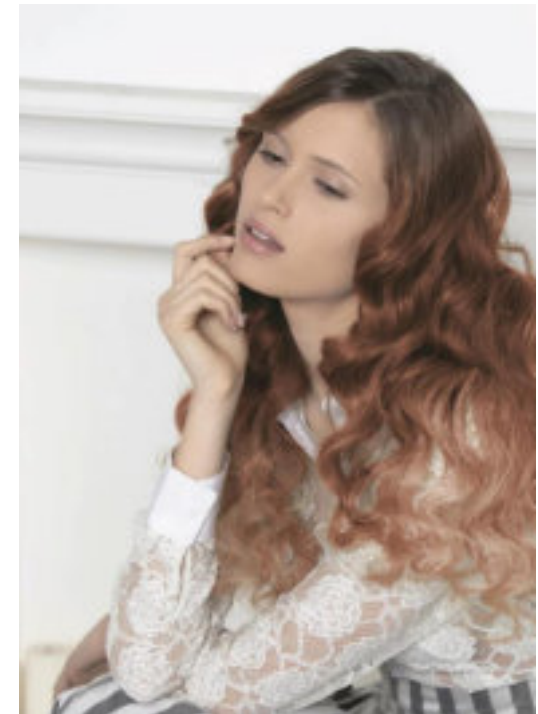
**EVERY**  
**Green**   
LUNAR SHADES

**DIKSON**<sup>®</sup>

## LUNAR SHADES : what does it do?

- **TONES** LIGHTENED HAIR
- Provides a «**COLOUR REFRESH**»
- **CORRECTS** unwanted **YELLOW TONES**
- Increases **SHINE** ON **BLONDE** or **NATURAL HAIR** of other colours, without altering the base colour

**EVERY**  
**Green**   
LUNAR SHADES





**EVERY**  
**Green**   
LUNAR SHADES

but above all the **EVERYGreen LUNAR SHADES toners only act on pre-lightened hair** with a level of 9 or 10.

This is why they can be applied on the whole head, but will only have a **TONING EFFECT ONLY ON PRE-LIGHTENED AREAS.**

**They do not lighten** the natural pigments of the hair.  
**They do not change** the natural and artificial bases.

**DIKSON**<sup>®</sup>



## LUNAR SHADES : what are the formulation characteristics?

Their formula is **AMMONIA FREE** , to guarantee **HIGH TOLERABILITY** and less aggressive action on hair and scalp

They are products with **REDUCED ALKALINE CONTENT**, which makes the colour last longer

They contain **JOJOBA** and **ROSEHIP OILS** of **ORGANIC ORIGIN**, which limit the aggressive action of the colouring process

Their pleasant fruity fragrance is **ALLERGEN-FREE**;

The EVERY Green LUNAR SHADE Toners **do not contain animal-derived ingredients** or **ingredients for which animals have been exploited**. For this reason they are considered **VEGAN COSMETICS**

In addition the EVERY Green LUNAR SHADES Toners **defend animals**, in **compliance** with the **directive** which, since 2009, imposes the **ban on animal testing**, as well as the **use and import of cosmetic ingredients tested on animals**.



\* Tonalizzante    \*\* Attivatore

# EVERY Green LUNAR SHADES



# ACTIVE INGREDIENTS

It is extracted from the seeds of SIMMONDSIA CHINENSIS, a plant native to China.

Thanks to its film-forming properties, it leaves the hair **SOFT** and **Voluminous**.  
IT also **HELPS STRENGTHEN HAIR**.  
**Protects and moisturizes hair fibers.**



Organic JOJOBA oil

It acts directly on the hair structure, affecting its consistency and increasing its strength.

Basically: it makes hair **HEALTHIER** and **IMPROVES ITS APPEARANCE**.



Organic **ROSEHIP** oil

LUNAR SHADES : product range  
7 colours + 1 clear + activator

3 bottles per box



300 ml



3 x 60 ml



9.01 | SILVER ICE



9.02 | VIOLET ICE



7.011 | TITANIUM



9.024 | SUNSET PINK



9.022 | MOON LAVENDER



9.13 | SAND



9.034 | PEACH

1000 ml





CLEAR is a NEUTRAL colour specially designed to:

CLEAR

300 ml

delicate colour result

more delicate, less «coloured» result

even more delicate and even less «coloured» result

LIGHT PASTEL EFFECT	TONER 45ml	+	CLEAR TONER 15ml	+	ACTIVATOR 90ml
ENHANCED PASTEL EFFECT	TONER 30ml	+	CLEAR TONER 30ml	+	ACTIVATOR 90ml
VERY ENHANCED PASTEL EFFECT	TONER 15ml	+	CLEAR TONER 45ml	+	ACTIVATOR 90ml

The PASTEL EFFECT achieved is directly proportional to the amount of CLEAR toner used in a mixture with the other TONERS: the more CLEAR toner you use, the greater the final PASTEL effect achieved.

If mixed with other LUNAR SHADES, the CLEAR TONER can be applied on the whole head, but it will have a toning effect only on the pre-lightened areas.

add **GREATER SHINE** to **HAIR** without altering the base colour, if used alone.

**TO ENHANCE THE FINAL PASTEL EFFECT**, if mixed with any of the 7 other **EVERYGreen LUNAR SHADES**, softening or lightening them.



When the toning mixture contains more than 50% of CLEAR, the **DURATION OF THE TREATMENT** may be reduced.

**EVERY  
Green**  
LUNAR SHADES  
THE ACTIVATOR



For the EVERYGreen LUNAR SHADES Toners, a specific ACTIVATOR with a low hydrogen peroxide content has been designed. The SYNERGISTIC action of the Toner and Activator ensures optimal results in terms of tone and duration. Available in 1000 ml bottle.

Enriched with :

HYDROLYSED RICE PROTEINS

ORGANIC POMEGRANATE OIL

ORGANIC MACADAMIA OIL



## How is Lunar Shades applied?

EVERY  
Green  
LUNAR SHADES



1

Mix the chosen shade of EVERYGREEN LUNAR SHADES toner with the Activator, in a 1:1.5 mixing ratio, until you obtain a fluid gel (average dose for long hair: 50/60 ml of product plus 75/90 ml of ACTIVATOR).

2

Apply at the shampoo bowl, after washing hair with the EVERYGreen COLORED HAIR RESTRUCTURING SHAMPOO, on natural hair with a tone level of 9/10 or previously Lightened, or immediately after the lightening treatment. The lighting tone level must be 9/10.

3

Process for 5 to 15 minutes, depending on the desired intensity of tone, hair porosity and the lightened base, at room temperature. Do not expose to sources of heat.

4

Rinse thoroughly without using shampoo or wash with a very gentle product.

5

Apply the EVERYGreen COLORED HAIR restructuring mask.

# FAQ



DIKSON®

What is the advantage of being an AMMONIA FREE product?

Lower risk of allergic reactions (itching, dermatitis, skin hypersensitivity) thanks to a less aggressive formula, also suitable for sensitive skins.

And what is the advantage of being a product WITH REDUCED ALKALINE CONTENT?

It makes the colour last longer.

What effects do the EVERYGreen LUNAR SHADES TONERS have on NATURAL or BLONDE hair with a tone level other than 9/10?

They add shine without changing the base colour.

How often must the EVERYGreen LUNAR SHADES Toner be applied?

As often as you wish, even if it has not washed out completely. Unbleached hair does not change its colour. It lasts about 10/15 WASHES.

EVERY  
Green   
LUNAR SHADES





Can EVERYGreen LUNAR SHADES be used to neutralise the various lightening bases of previously bleached hair?

YES, the toning process makes the base more even.

What is the mixing ratio of the EVERYGreen LUNAR SHADES Toners with the specific Activator?

The ratio is 1:1.5. It remains the same even when a Toner mixed with the CLEARneutral shade is used (e.g.: 45ml TONER+ 15ml CLEAR TONER + 90ml ACTIVATOR).

When is the CLEAR neutral toner user?

To add shine to hair without altering the base colour, if used alone. TO ENHANCE THE FINAL PASTEL EFFECT, if mixed with any of the 7 other EVERYGREEN LUNAR SHADES, softening or lightening them. If mixed with other LUNAR SHADES, the CLEAR toner can be applied on the whole head, but it will have a toning effect only on lightened parts.

Is it possible to remove the effect of the EVERYGreen LUNAR SHADES Toner before it washes out naturally?

YES. To do this, we recommend using a shampoo with alkaline pH.

How to achieve toning like that of the models on the cover of the brochure?

MODEL ON THE LEFT: Use 9.13 SAND Toner in a 1:1.5 mixing ratio with Activator (e.g. 60ml + 90ml) Leave-on time 15 minutes.

MODEL ON THE RIGHT: Use 9.022 MOON LAVENDER Toner. ON THE LENGTHS: in 1:1 mixing ratio with Activator (e.g.60ml + 60ml), for greater toning intensity. ON THE ENDS: 9.022 MOON LAVENDER mixed in equal amounts with CLEAR (e.g. 30ml + 30ml) + 90ml of ACTIVATOR. Leave-on time: 15 minutes.



EVERY  
Green   
LUNAR SHADES

DIKSON®

**DIKSON<sup>®</sup>**

**EVERY**  
Green 

 **MÜSTER & DIKSON S.p.A.**